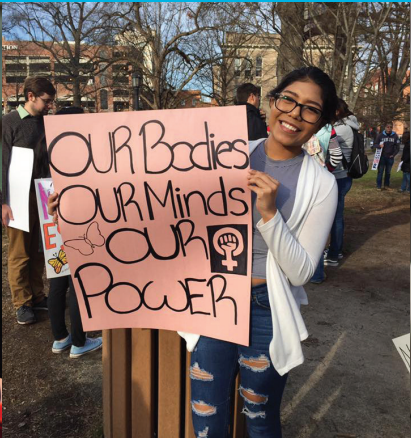




Ms. FOUNDATION  
FOR WOMEN



# 2017 ANNUAL REPORT WE WON'T GO BACK





**Ms. FOUNDATION**  
FOR WOMEN

## MISSION

To build the collective power of women in the U.S. to advance equity and justice for all.



**Ms. Foundation for Women**  
12 MetroTech Center, 26th Floor  
Brooklyn, NY 11201  
Forwomen.org • info@ms.foundation.org • 212.742.2300

Follow us on  
Facebook:  
<https://www.facebook.com/MsFoundationforWomen>  
Twitter and Instagram:  
@msfoundation

# Table of Contents

- Welcome from the Board Chair ..... pg 3
- Our Leadership ..... pg 4
- Women's Economic Justice ..... pg 5
- Women's Health ..... pg 10
- Women's Safety ..... pg 16
- Grassroots Movement in Action ..... pg 22
- 29th Annual Gloria Awards ..... pg 24
- Donor Profile: Lynn Malerba ..... pg 29
- Our Supporters ..... pg 30
- Asian Women Giving Circle: Donors ..... pg 31
- Donor Profile: Clara Duffy ..... pg 32
- Gloria's Future Fund ..... pg 33
- Estates ..... pg 33
- Statement of Activities, 2016 - 2017 ..... pg 34
- Infographic: Funding a Feminist Future..... pg 35

# Welcome

Friends:

I joined the Ms. Foundation for Women in 1978 as a proud young feminist during feminism's second wave. It was five years after *Roe v. Wade* legalized abortion and expanded safe reproductive health choices for women; that summer, more than 100,000 people marched in the historic March for the Equal Rights Amendment in Washington, DC. Pregnant working women also gained protection against workplace bias under the Pregnancy Discrimination Act.

In this powerful wave, the Ms. Foundation stood out for being the first women's foundation, funding revolutionary work by women, for women, and advocating for our reproductive rights, economic opportunities, and safety. The Ms. Foundation "put its money where its mouth was" with financial support for domestic violence shelters and sexual assault hotlines, and defied social mores to help defend LGBTQ+ women's right to child custody.

Nearly 40 years later, **our fight is not over**. The Ms. Foundation's mission and focus are more critical and urgent than ever. The year 2016 proved that those of us who believe in progress, equality, and justice must fight even harder against a resurgence of blatantly anti-progressive, anti-woman, and racist agendas that threaten even our smallest wins. In a year where we celebrated Hillary Rodham Clinton as the first woman to become the presidential nominee for a major U.S. political party, we watched as hateful rhetoric and harmful policies culminated in Donald Trump's election. Yet we also showed that **#WeWontGoBack** — when 5,000,000 of us around the world joined together to be part of the historic Women's March in January 2017.

As we did 44 years ago, the Ms. Foundation today stands for gender equity. Then as now, we are committed to resisting every attempt to take away women's choices, safety, and opportunities. We believe and trust in women's collective power as an undeniable force for change, and we amplify the voices and experiences of women of color and women from low-income communities, who suffer the greatest impact of repressive legislation. This is why during fiscal year 2017, the Ms. Foundation:

- **awarded \$630,000 to fund women's reproductive health organizations** battling anti-choice policies and fighting to keep women's health clinics open in the most repressive counties across the country;
- **funded economic justice organizations with \$500,000** to advance improvements in quality childcare and access, to fight systemic abuse of low-wage workers, and further women's economic security;
- and granted **\$205,000 to support activist organizations focused on countering systemic racial and gender bias that harms Black women and girls.**

I am honored to share our Annual Report as a reflection on the incredible work happening toward a future where every person has the choice and opportunities she deserves. We thank our grantee-partners for their fearless actions in battling sexism and racism, and our donors who invest in our efforts to make a feminist future more possible. Together, we will keep marching, speaking out, and acting out — and together, we will celebrate every victory we create for equality.

In solidarity,



Susan Dickler, Board Chair



Ms. Foundation Board Chair Susan Dickler,  
Co-Founding Mother Gloria Steinem,  
President and CEO Teresa C. Younger



Ms. Foundation Board and Leadership (l-r) President and CEO Teresa C. Younger with Alicia Lara; Eve Ellis; Catherine Yelverton; Board Chair Susan Dickler; Co-Founding Mother Gloria Steinem; Seth Rosen; Lynn Malerba; Tom Watson; Cathie Hartnett; Suzanne Lerner; Jenna Bussman-Wise; and Heather Arnet.

## Our Leadership: Board of Directors

**SUSAN DICKLER**  
**CHAIR**

Advisor, The Oma Fund

**JOCELYN FRYE**  
**VICE-CHAIR**

Senior Fellow,  
Center for American Progress

**JENNA BUSSMAN-WISE**  
**TREASURER**

Vice President, Alternative Investments,  
Equity and External Mandates,  
AIG Investments

**LYNN MALERBA**  
**SECRETARY**

Chief, Mohegan Tribe

**HEATHER ARNET**

CEO, Women and Girls Foundation of  
Southwest Pennsylvania

**EVE E. ELLIS, CFP**

Financial Advisor and Portfolio  
Manager, The Parity Portfolio  
The Matterhorn Group at Morgan  
Stanley

**LAUREN EMBREY**

President and CEO,  
Embrey Family Foundation

**CATHIE HARNETT**

Nonprofit Executive  
Management Consultant

**ALICIA LARA**

Senior Vice President of Global Impact,  
United Way Worldwide

**SUZANNE LERNER**

Co-Founder and Executive Vice  
President, Michael Stars

**SETH ROSEN**

Senior Associate, Joan Garry Consulting

**SIMONE SNEED MCGURL**

Board Liaison, Environmental  
Defense Fund

**GAIL WASSERMAN**

Senior Vice President, Public Affairs,  
American Express

**TOM WATSON**

Founder and President, Causewired

**CATHERINE YELVERTON**

Founder and CIO, Buford Tuttle Capital,  
LLCC

## Our Leadership: Executive Team

**TERESA C. YOUNGER**

President and CEO

**ROSINA BARBA**

Vice President, Finance and  
Administration

**JOSH PUSHKIN**

Vice President, Development

**A. ANGÉLIQUE ROCHÉ**

Vice President, External Affairs

**SUSAN WEFALD**

Vice President, Programs



Ms. Foundation Executive Team (l-r):  
A. Angélique Roché; Josh Pushkin; Teresa C. Younger;  
Rosina Barba; and Susan Wefald

In the U.S. 76.4 million women work today, more than double the number of women who worked in the 1950s. Yet women still earn less than men for comparable work, and one in seven women, including those in the workforce, live at or below the federal poverty line. Systemic gender and racial bias continue to negatively impact women’s ability to advance and earn equitably, under policies created through discriminatory legacies that undervalue care responsibilities and deprecatingly refers to those responsibilities as “women’s work.”

The Ms. Foundation for Women’s **Economic Justice program** is building an integrated movement to transform public policies that impact women’s economic security; to increase access to childcare subsidies; and to develop leadership among childcare workers and low-income parents while advancing jobs in the care sector. At the core of this strategy is support for grassroots advocacy and policy efforts led by women, especially women of color, who work to secure adequate public funding for childcare and to raise the quality of job standards for childcare workers.

The Ms. Foundation strategically selected its cohort of childcare grantee-partners for funding renewal in 2016 - 2017 and beyond, while also expanded our grantmaking portfolio to experiment in new areas of investment.

## Universal Access and Opportunities to Childcare for Low-Income Women

In 2017 our Economic Justice program continued multi-year efforts to align multiple advocacy fronts, with support for grassroots organizing parents and providers around state budget fights, securing collective bargaining rights and job quality for childcare providers, and supporting resources for childcare providers for service improvements. This year, the Ms. Foundation, with the input of its grantee-partners, released the Childcare Impact Assessment report. The report documented the impact of the Ms. Foundation’s grantmaking on the broader childcare and philanthropic landscape over a five-year period; included real stories from our grantee-partners; and highlighted the groundbreaking impact of their work on state and national levels.

## Southern Strategy: Centering Women’s Economic, Social, and Political Power

In 2017 eight of the top 13 metropolitan areas with the best hiring prospects were in the American South. As the South experiences rapid economic and investment, its legacies of racial violence, slavery, and Jim Crow continue to create persistent, generational, and systemic barriers for women, especially women of color, who want to achieve economic self-sufficiency and obtain personal wealth. With the South’s continued critical social, political, and economic importance, its traditions of socially conservative, anti-immigrant, misogynist, and racist policies and culture have reached the national stage, expanding an environment that ignores the needs and issues of women and communities of color most harmed by their impact.

Women’s leadership is critical to resolving these contradictions in the region. That’s why the Ms. Foundation created a Southern Strategy — a new, targeted regional strategy that supports the increase of women’s true impact on policies throughout the region and invests in building grassroots Women’s Economic Agendas (WEAs) in the South. Using the model pioneered by grantee-partner Mississippi Low Income Childcare Initiative, we seek to replicate their efforts, beginning with North Carolina and Florida — two states with high potential for transformative change.

# ECONOMIC JUSTICE



Photo credit:  
Grantee-partner All Our Kin (CT)

# Grants: Universal Access and Opportunities in Childcare

## **Adhikaar for Human Rights and Social Justice ..... \$35,000** Executive Director: Pabitra Benjamin, Woodside, NY

Adhikaar for Human Rights and Social Justice (Adhikaar), a woman-led organization, promotes human rights and social justice through organizing, community education, grassroots advocacy, and leadership development for Nepali-speaking women and South Asian immigrants working in the informal sector as childcare providers, domestic workers, and as nail salons technicians. The Ms. Foundation’s grant supports Adhikaar’s work under its Quality Childcare for Economic Security project, which aims to create a new paradigm in the childcare system that supports low-income working parents and childcare providers.

## **All Our Kin ..... \$30,000** Executive Director: Jessica Sager, New Haven, CT

All Our Kin (AOK) trains and supports childcare providers at every stage of their development to help achieve their goal of building quality, sustainable childcare businesses. The Ms. Foundation’s grant supports AOK’s efforts in preserving dollars for Care 4 Kids, Connecticut’s childcare subsidy program for low-income families, in its 2018 - 2019 budget; ensuring family childcare is fully included in new state childcare developments, with input from family childcare providers; engaging local communities to ensure that they are implementing policies that support family childcare programs, increase access to quality childcare that meets the needs of today’s working families, improve job quality and earnings for providers, and create opportunities for providers to help craft and provide input into these policies; and enhancing family childcare providers’ professional status, earnings, and recognition by building their capacity as business owners.

## **California Childcare Resource and Referral Network, Parent Voices ..... \$40,000** Statewide Organizer: Mary Ignatius, San Francisco, CA

California Childcare Resource and Referral Network, Parent Voices (PV), a parent-led and -run grassroots advocacy project, fights for quality, accessible, and affordable childcare through innovative community organizing and leadership development. The Ms. Foundation’s grant supports PV’s campaign to increase access to affordable childcare by acquiring new funding for families on waiting lists, update income eligibility, guidelines, and increase the rates paid to childcare providers; budget and legislative advocacy activities such as organizing public actions and positioning parent members to provide testimonies at budget hearings and organizing; and continued training of low-income women to engage decision makers by developing their role as leaders and organizers in campaigns and policy building.

## **Centro de los Derechos del Migrante, Inc. .... \$30,000** Executive Director: Rachel Micah-Jones, Baltimore, MD/ Mexico City, Mexico

Centro de los Derechos del Migrante, Inc. (Center for Migrant Rights; CDM) is the first transnational workers’ rights law center based in Mexico focused on U.S. workplace rights. The Ms. Foundation’s grant supports CDM’s efforts to strengthen and expand labor protections for migrant childcare workers, particularly those working under J-1 visas; and prevent the abuse and exploitation of migrant childcare workers through two primary strategies: 1) conducting worker-driven policy advocacy in coalition with allied organizations, and 2) documenting the abuse of childcare workers and other migrant women working in the U.S.

## **Childspace Day Care Centers, Inc. .... \$40,000** Chief Operating Officer: Susan A. Kavchok, Philadelphia, PA

Childspace Day Care Centers, Inc. (CDCC) works to improve the quality of jobs for traditionally low-paid childcare workers, increase resources, and improve the quality of care. The Ms. Foundation’s grant supports Childspace as it develops their worker-owned childcare cooperative; trains childcare providers to advocate for policies that support high quality childcare programs through their Provider Committee comprised of women of color childcare providers; launches a new advocacy campaign to support expansion of childcare while working with the state and city offices to address implementation challenges for centers; and develops a snapshot of Pennsylvania’s goals in encouraging and supporting universal access to high-quality childcare, and improved job quality for childcare providers and workers in other low-wage industries.

## **Garment Worker Center ..... \$40,000** Director: Marissa Nuncio, Los Angeles, CA

Garment Worker Center (GWC), a worker rights organization, organizes low-wage garment workers in Los Angeles in the fight for social and economic justice. The Ms. Foundation’s grant supports GWC’s childcare sector work, as it partners with the childcare center Para Los Niños to increase access for garment worker children; continues to address members’ needs regarding informal care; hosts a resource fair to assist with subsidized care, afterschool programs, and informal care providers; engages in local advocacy, including as a member of the Los Angeles Coalition Against Wage Theft, for paid sick leave at the city level; and explores innovative models for corporate support for employees’ childcare needs.

**Mississippi Low-Income Child Care Initiative** ..... \$30,000

Executive Director: Carol Burnett, Biloxi, MS

Mississippi Low-Income Child Care Initiative (MLICCI) is a grassroots organization comprised of childcare providers, parents, and community leaders. The Ms. Foundation’s grant supports MLICCI in promoting universal access to childcare in Mississippi by campaigning for policies that prevent further shrinkage of subsidies for childcare services for eligible children; reforming childcare subsidy policy to improve parental access and retention; strengthening the financial viability of childcare providers participating in the childcare subsidy program by launching a small pilot program of the Childcare and Adult Food MLICCI sponsorship program, titled Healthy Center Healthy Kids; and promoting racial equity in the childcare subsidy program by leveraging and advocating for policy recommendations in the U.S. Commission of Civil Rights report.

**Mujeres Unidas y Activas** ..... \$40,000

Co-Director: Andrea Lee, San Francisco, CA

Mujeres Unidas y Activas (MUA) is a grassroots organization of Latina immigrant women that promotes personal transformation and building community power for social and economic justice. In 2013, after a seven-year statewide campaign, MUA’s domestic worker leaders won the historic California Domestic Workers Bill of Rights. The Ms. Foundation’s grant supports expanding MUA’s targets to include other issues immigrant women workers face, including access to healthcare; and to prepare childcare workers to lead enforcement, base building, and policy campaigns by deepening political analysis, improving member skills, and amplifying messaging.

**The OLÉ Education Fund** ..... \$20,000

Executive Director: Matthew Henderson, Albuquerque, NM

The OLÉ Education Fund (OLÉ) is a grassroots community organization comprised of working families in New Mexico. The Ms. Foundation’s grant supports OLÉ as it engages childcare providers in more direct action to embolden them to confront policymakers about their decisions to underfund providers, using direct action that earns a higher media profile, develops more powerful leaders, and creates collective pressure among policymakers to commit new resources to early education.

## Grants: Southern Strategy: Centering Women’s Economic, Social, and Political Power in the South

**Blueprint NC** ..... \$45,000

Executive Director: Erin Dale Byrd, Raleigh, NC

Blueprint NC (BPNC) is a partnership of state-level public policy, advocacy, and grassroots organizing groups dedicated to achieving a better, fairer, healthier North Carolina. BPNC works in direct partnership with the North Carolina Black Women’s Roundtable, a network and safe space for Black women to convene, identify, and address the unique barriers Black women face. The Ms. Foundation’s grant supports BPNC as it grows and strengthens the Roundtable by extending their City Delegates program and engaging in broader community outreach; and expands their communications training and creates a survey that will gather data on their economic experiences that will inform a narrative, a policy agenda, and campaign development. The grant also helped support BPNC’s Legislative Day in June 2017 where members received training in connecting economic justice issues impacting their lives to policies.

**Miami Workers Center** ..... \$45,000

Executive Director: Marcia Olivo, Miami, FL

Miami Workers Center (MWC) is Miami’s leading social change nonprofit organization that fights for social, racial, economic, and gender justice, uniting Latinx and African Americans across the most vulnerable neighborhoods in the city. The Ms. Foundation’s grant supports MWC’s work with the Femme Agenda, including community mobilization, rapid response support, and policy strategies to address the needs of immigrant women, including securing temporary housing spaces for women and children; addressing trafficking and supporting victims of labor trafficking and other workplace abuses, and strengthening support for domestic violence survivors including advocating for expanded local certification of U visas (provided to nonimmigrant crime victims) and other immigration protections.

**Mississippi Low-Income Child Care Initiative ..... \$45,000**

Co-Founder and Director: Cassandra Welchlin, Biloxi, MS

In 2014 Mississippi Low-Income Child Care Initiative launched a new program called the Mississippi Women’s Economic Security Initiative (MWESI), led by Co-Founder and Director Cassandra Welchlin and MLICCI Executive Director Carol Burnett to address the barriers to women’s economic success. The Ms. Foundation’s grant supports MWESI as it continues its three-year strategy to build a policy platform for women’s economic security in Mississippi, based on thorough analysis of economic issues, employment challenges, and problems of poverty plaguing Mississippi women, utilizing a gender perspective; and to reinstate the Women’s Legislative Caucus in the Mississippi state legislature. MWESI will continue to hold town hall meetings; build power towards the passage of an ambitious policy agenda; strengthen and expand their statewide partners and the leadership team; and deepen their capacity for research, gender policy analysis, and strategic communications.

**Atlanta Jobs with Justice ..... \$30,000**

Executive Director: Shannon Reaze, Atlanta, GA

Atlanta Jobs with Justice (Atlanta JwJ) is a coalition of labor, faith, community, and student organizations and workers organizing to win economic justice in workplaces and communities. The Ms. Foundation’s grant supports Atlanta JwJ as it launches its strategy to engage women living in public housing and those working at the statewide level to increase the base of women informed about economic justice policies; to train and develop leaders; and to organize for collective bargaining rights in key industries, including food service, retail, domestic and home care, and the public sector.

**Southern Rural Black Women’s Initiative for Economic and Social Justice ..... \$30,000**

Director: Oleta Fitzgerald, Jackson, MS

The Southern Rural Black Women’s Initiative for Economic and Social Justice (SRBWI) works across the Black Belt in Alabama, Georgia, and the Mississippi Delta to address the quality of life and human rights of rural Black women. The Ms. Foundation’s grant supports SRBWI’s infrastructure building; engagement of communities through advocacy and movement-building skills training; and continued hosting of town hall meetings and forums to help build a cohesive agenda on women’s economic security.

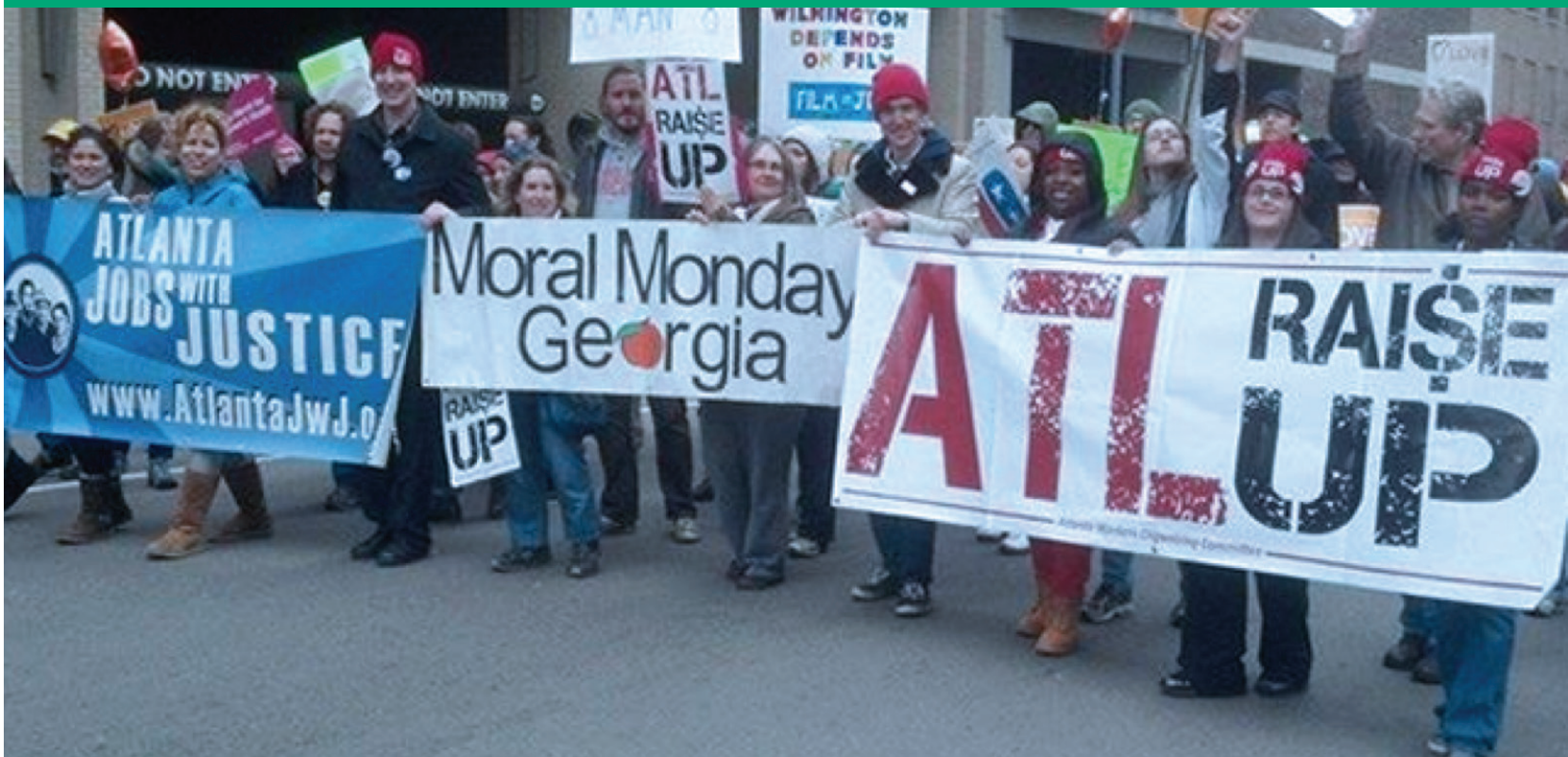
*I see a world where women make the same money for the same work as men do, where there are an equal number of women as men in all professions, and where women are referenced by their professions without "woman" as a descriptor. There will be equal opportunities and treatment for girls in educational and vocational programs, followed by job offers. And there will be no more violence against any of us!*

— Dana **#WeWontGoBack**



Spotlight on:

# ATLANTA JOBS WITH JUSTICE



In a region known for its hostility to labor unions, where the average family income is well below the national average, Atlanta Jobs with Justice (Atlanta JwJ), founded in 1987, is among those leading the grassroots fight for positive change on behalf of working families. As a coalition made up of labor unions, community groups, student and faith-based organizations, and individuals committed to economic and social justice, Atlanta JwJ is passionate about defending the rights and safety of workers; increasing economic opportunities and security for working families; and promoting progressive legislation that supports those working families and their communities.

From 2013 to 2015 Atlanta JwJ worked hard to defeat Georgia's attempt to cut unemployment benefits for school workers – work that led to larger campaigns focused on local and state advocacy against tactics to eliminate worker benefits and jobs. That included their success in 2017 against Georgia's State Bill 469, which tried to ban picketing and civil disobedience and to limit labor unions' ability to organize and gain members. They earned another crucial victory for communities when their Fightfor15 campaign helped City of Atlanta workers gain a \$15-an-hour minimum wage.

Atlanta JwJ is not just dedicated to their own grassroots efforts fighting for worker dignity, protections, and opportunity. In pledging to make change, they're standing up for progress, by being "there at least five times for someone else's fight, as well as my own. If enough of us are there, we'll all start winning."

Visit Atlanta JwJ: [www.atlantajwj.org](http://www.atlantajwj.org)

# WOMEN'S HEALTH

The November 2016 election of Donald Trump and a Republican stronghold on both the U.S. House of Representatives and the U.S. Senate brought a marked increase in anti-woman, anti-reproductive justice, anti-immigrant, anti-LGBTQ+, and anti-social safety-net legislation – elevating state-level regressive policies in conservative states to a federal level. The Trump Administration's first executive orders — reinstating the “Global Gag Rule” and immediate attacks on the Affordable Care Act (ACA) — were harbingers of the battle for reproductive justice and healthcare that progressive, inclusive organizations would face. Throughout 2017, House and Senate conservatives continued efforts to “repeal and replace” the ACA without a viable replacement, potentially leaving millions of Americans, especially low-income women, women of color, and children, without affordable, accessible healthcare.

Despite these challenges, there was progress in the reproductive health movement. Some states passed proactive measures to protect women's reproductive health service coverage; grassroots organizations, including three of Ms. Foundation's grantee-partners, spoke at the historic Women's March in Washington, DC; they also sustained pressure on legislators against ACA repeal-and-replace efforts that successfully slowed down Republican efforts to dismantle Obamacare.

## Equity in Access: Reproductive Health, Rights and Justice Initiative

The Ms. Foundation's Reproductive Justice program supports local, state, and national efforts to advance equity in abortion access, contraception, and the full range of reproductive health services for all women and families. Partnering with organizations led by women of color and women from low-income and immigrant communities, we center their leadership and sustainability as they organize, mobilize, and lead fights for longer-term, sustainable policy wins for reproductive health, rights, and justice.

In 2017 the Ms. Foundation's support to our grantees continued to help build state-level capacity to mobilize and give voice to underrepresented constituencies, increase civic engagement through organizing, and shift power to contribute to longer term, sustainable policy wins for reproductive health, rights, and justice.

## Healthcare Reform: Advancing Policy, Advocacy, and Organizing to Ensure Access to Reproductive and Sexual Health Services

In 2017 House and Senate Republicans reinvigorated their efforts to dismantle the Affordable Care Act (ACA) through various measures, including a push to repeal and replace the ACA with an alternative healthcare bill. Advocates successfully rallied forces to defend against these efforts: Still, the threat to women's health coverage remains. For more than six years, the Ms. Foundation has supported grantee-partners in the reproductive health, rights, and justice movement, actively influencing their state's rollout of the ACA. Grantee-partners ensured that women's reproductive health services were included, prioritized, and protected. In 2016, the Ms. Foundation began phasing out this funding area and moved most of our grantee-partners into our broader Reproductive Justice program. The last year for the Ms. Foundation's ACA-specific funding was 2017. Our focus — to advance and protect health coverage for women of color, low-income, and immigrant women — remains closely aligned with our goal to increase equity in access to reproductive health services for all.



Photo credit:  
Grantee-partner URGE (DC)

# Grants: Equity in Access: Reproductive Health, Rights, and Justice Initiative

## **ACT for Women and Girls.....\$40,000**

Co-Director: Erin Garner Ford, Visalia, CA

ACT for Women and Girls (ACT) works in Tulare County, California, to engage young women in rural and immigrant communities in leadership and advocacy to promote reproductive justice activism and social change, improve the reproductive justice policy climate, and increase access to contraception and abortion care. The Ms. Foundation's grant supports ACT's youth leadership development programs and voter registration and engagement campaigns. The Ms. Foundation's grant also supports its grassroots organizing, emerging legislative advocacy, and Pharmacy Access campaign to increase access to emergency contraception.

## **California Latinas for Reproductive Justice.....\$35,000**

Executive Director: Laura Jimenez, Los Angeles, CA

California Latinas for Reproductive Justice (CLRJ) is a statewide policy and advocacy organization working to advance California Latinx families and communities' reproductive health and rights. The Ms. Foundation's grant supports CLRJ's mission and efforts to ensure that all Latina adolescents and young women have access to culturally appropriate, comprehensive, accurate, and unbiased reproductive rights and sexual health information and services.

## **Colorado Organization for Latina Opportunity and Reproductive Rights.....\$40,000**

Executive Director: Cristina Aguilar, Denver, CO

Colorado Organization for Latina Opportunity and Reproductive Rights (COLOR) is a statewide organization dedicated to promoting and protecting reproductive health for Latinx and their families through leadership development, organizing, and advocacy. The Ms. Foundation's grant supports COLOR as it engages mothers, students, single women, single mothers, LGBTQ people, incarcerated women, and allies in the Latina community through advocacy, organizing, and training to advance access and support for reproductive justice to move Colorado in a direction where low-income women can access abortions, contraception is available to all women, and information about family planning is readily available for families. The Ms. Foundation's grant also supports COLOR's cross-movement building and alliances with organizations working in other fields.

## **El Pueblo.....\$45,000**

Executive Director: Angeline Echeverria, Raleigh, NC

El Pueblo in North Carolina is a statewide advocacy and public policy immigration rights organization that provides leadership development, proactive and direct advocacy, education, and cross-cultural understanding in the Latinx community. The Ms. Foundation's grant supports El Pueblo's program Derechos Sin Fronteras, an intensive reproductive health and justice training program with Latinx youth leaders. The grant also supports El Pueblo's policy, advocacy, intergenerational organizing, and cross-movement work between immigrant rights and reproductive justice.

## **Kentucky Health Justice Network \*.....\$20,000**

Board Chair: Caitlin Willenbrink, Louisville, KY

Kentucky Health Justice Network (KHJN) creates a broad-based, inclusive participation in a reproductive justice movement to increase the access, quality, and scope of culturally relevant and accurate health information and services for low-income women of color and the LGBTQ+ community. The Ms. Foundation's grant supports KHJN in organizing and providing grassroots education to women who identify as low-income, rural, young, women of color, and immigrant, as well as ramping up its Trans Health campaign to support education and awareness of the health barriers among the trans community.

## **National Asian Pacific American Women's Forum \*.....\$50,000**

Executive Director: Sung Yeon Choimorrow, Chicago, IL

National Asian Pacific American Women's Forum (NAPAWF) is a national policy and advocacy organization working to expand access to reproductive health for Asian American and Pacific Islander (AAPI) women and girls, with a focus on increasing access to reproductive health services among AAPI immigrant communities, and blocking abortion restrictions framed as race- and sex-based selection measures (PRENDA). The Ms. Foundation's grant supports NAPAWF's key strategies, such as leadership development of AAPI communities through their Reproductive Justice Leadership Institute (RJLI), research and analysis of how issues specifically affect AAPI communities, grassroots organizing, strategic communication, coalition/chapter building, legislative advocacy, and voter engagement.

**National Latina Institute for Reproductive Health \* ..... \$40,000**

Executive Director: Jessica Gonzalez-Rojas, New York, NY

The National Latina Institute for Reproductive Health (NLIRH) ensures Latinas’ rights to reproductive health and justice through public education, community mobilization, and policy advocacy. The Ms. Foundation’s grant supports NLIRH’s mission in increasing access to abortion, eliminating reproductive health disparities, and advancing the rights of immigrant women; and through strengthened engagement with their Latina Advocacy Network (LAN), building a strong grassroots advocacy base in the Rio Grande Valley in Texas. The grant also supports NLIRH’s efforts to create community spaces for discussions on reproductive health and rights, and to engage in intersectional advocacy, encouraging immigrant rights groups to incorporate gender analyses in their work.

**Native American Community Board \* ..... \$30,000**

Executive Director: Charon Asetoyer, Lake Andes, SD

Native American Community Board (NACB) addresses Native American people’s concerns regarding health, education, land and water rights, and economic development issues, and works with policymakers and communities to ensure standardized sexual-assault policies and protocols for Indian Health Services (IHS) are implemented. The Ms. Foundation’s grant supports training emerging Native women activists in civic engagement and reproductive justice issues in South Dakota, Oklahoma, and New Mexico. The grant supports NACB in advocating for IHS for the implementation of standardized sexual-assault policies and protocols affecting women victims of sexual assault.

**Planned Parenthood Southeast ..... \$20,000**

Director of Public Policy: Felicia Brown-Williams, Atlanta, GA

Planned Parenthood Southeast (PPSE) ensures quality reproductive health for women, men, and families by providing comprehensive, medically accurate sex education and services and advocating for reproductive health in Alabama, Georgia, and Mississippi. The Ms. Foundation’s grant supports PPSE in building constituency power by growing a stronger base and strategy and to continue its campaigns and advocacy efforts while simultaneously looking for innovative ways to serve its constituency. PPSE continues to work toward systemic change in policy around reproductive healthcare access, increasing public support for access, and working with policymakers and the public to defeat access restrictions. The Ms. Foundation’s grant also supports PPSE’s work to hold listening meetings in targeted City Council wards/districts within a select group of cities in Alabama and Mississippi, focusing in particular on women of color and young women, and its engagement in Mississippi’s Women’s Economic Security Initiative.

**Power U Center for Social Change\*\* ..... \$30,000**

Executive Director: James Lopez, Miami, FL

Power U Center for Social Change develops leadership among Black and Latinx youth and Black women in South Florida to lead the struggle to liberate all oppressed people, and uses an intersectional approach to issues of birth justice, abortion access, and the criminalization of Black women and girls in the school-to-prison pipeline and pushout. The Ms. Foundation’s grant supports Power U’s youth and young parent organizing; cross-movement work in economic justice and safety; Circle of Mamas birth justice program; and partnership with fellow Ms. Foundation grantee-partners National Latina Institute for Reproductive Health and Miami Workers Center.

**SisterReach \* ..... \$30,000**

CEO: Cherrisse Scott, Memphis, TN

SisterReach is the first reproductive justice organization in Tennessee, dedicated to the reproductive autonomy of women and girls of color, poor women, rural women, and their families, using faith-based organizing, civil engagement, and leadership development. The Ms. Foundation’s grant supports SisterReach’s institutional growth, fiscal health and sustainability, and cultivation of leadership among staff as they work on comprehensive sexual health education; abortion and contraception access; against criminalization of women through fetal homicide laws; ACA education; service provider cultural competency to women of color; against domestic violence; and HIV/AIDS education. SisterReach’s signature activity is their inter-faith community education and organizing in Black churches.

**SisterSong \* ..... \$30,000**

Executive Director: Monica Simpson, Atlanta, GA

SisterSong is a national, Southern-based organization uniting women of color and indigenous women to dismantle reproductive and racial oppression. SisterSong conducts reproductive justice trainings to influence and expand the reproductive justice movement; convenes reproductive justice leaders; and engages in culture change work. The Ms. Foundation’s grant supports SisterSong’s focus on a Southern reproductive justice coalition of 18 women of color leaders from 13 organizations across six states (MS, GA, VA, TX, NC, and TN) and national policy priorities that center on the South, including on issues such as Targeted Regulations of Abortion Providers (TRAP) laws, late-stage abortion bans, and Black women’s maternal mortality rates.

**SPARK Reproductive Justice NOW ..... \$30,000**

Executive Director: Dr. Krystal Redman, Atlanta, GA

SPARK Reproductive Justice NOW (SPARK) is a statewide, community-based reproductive justice organization that builds and sustains a powerful reproductive justice movement in Georgia, through organizing and building the leadership capacity of African Americans, Millennials, and LGBTQ youth and young families of color communities. The Ms. Foundation’s grant supports SPARK’s fight for equitable access to abortion through advocacy, leadership development, and civic engagement, as well as SPARK’s signature Speak Justice Take Action (SJTA) and Fierce Youth Reclaiming and Empowerment (FYRE) initiatives. The grant also supported SPARK’s monitoring and organizing in opposition to legislative proposals threatening reproductive justice during 2016 and 2017.

**URGE (United for Reproductive and Gender Equity) ..... \$40,000**

Executive Director: Kierra Johnson, Washington, DC

URGE (United for Reproductive and Gender Equity) is a national organization that supports emerging young leaders with training and provides tools to organize, network, and exchange ideas focused on a youth-centered pro-choice reproductive justice agenda. The Ms. Foundation’s grant supports URGE in building a strong base of young reproductive justice advocates through state chapters in strategic locations (KS, OH, TX, GA, and FL); training young leaders in the field to run reproductive justice campaigns at the local, state, and national levels; and framing and influencing national policy dialogue around reproductive justice, abortion rights, and access.

**West Virginia FREE ..... \$40,000**

Executive Director: Margaret Chapman Pomponio, Charleston, WV

West Virginia FREE (WV FREE) is a reproductive justice organization that works for women and families to improve education on reproductive options and rights. The Ms. Foundation’s grant supports WV FREE’s work to defend reproductive decisions; increase access to affordable birth control; protect personal decision-making; and educate the public, policymakers, and health providers on the links between supportive reproductive justice policies and decreased poverty levels and rates of unintended pregnancies. In addition, the grant supports WV FREE’s work in alliances with homeless shelters, labor groups, health reform advocates, maternal health programs, and LGBTQ organizations. WV FREE also works to protect minors seeking confidential abortion care by safeguarding judicial bypass processes and offering a contraceptive access initiative.

**Young Women United ..... \$40,000**

Executive Director: Tannia Esparza, Albuquerque, NM

Young Women United (YWU) works with and for young women of color and their allies to improve young people’s access to comprehensive sexuality education, information, and services in Albuquerque, New Mexico. The Ms. Foundation’s grant supports YWU’s innovative and dynamic strategies to engage and increase a grassroots voter base in rural communities; strengthen partnerships; organize to eliminate barriers to reproductive healthcare access; and create campaigns that dismantle myths about young parenthood and LGBTQ youth. YWU’s work addresses a range of issues that includes abortion access, “Ban the Box” legislation, expanding access to contraception (through pharmacist prescription authority), LARC (Long Acting Reversible Contraceptives) in the context of provider cultural competency and opposing coercive policies and practices, pregnancy-care and licensed midwifery, and education justice for young families.

*I want a future where every woman in every state of this great county has access to healthcare, and has control of her decisions about every aspect of her life and her body. Let no law or religion dictate our decision, for it is ours to make. It's a personal decision. It's a choice. And may every young girl know she, too, can and should reach for what she wants, including being president of these United States. America needs us now more than ever!*

— Liz #WeWontGoBack

## Grants: Healthcare Reform: Advancing Policy, Advocacy, and Organizing to Ensure Access to Reproductive and Sexual Health Services

### **Northwest Health Law Advocates ..... \$30,000**

Executive Director: Janet Varon, Seattle, WA

Northwest Health Law Advocates (NoHLA) is a legal and policy advocacy organization dedicated to improving access to affordable, quality healthcare for low-income women and immigrants in Washington. The Ms. Foundation's grant supports NoHLA as it advocates for Washington's Medicaid expansion to include reproductive health in addition to maternal/child health, ensure Qualified Health Plans compliance with contraceptive coverage requirements, and fight for coverage for formerly incarcerated women and immigrant women. The grant also supports NoHLA's state level and national work to defend the ACA and Medicaid.

### **Raising Women's Voices - New York ..... \$30,000**

Co-Founder and Director: Lois Uttley, New York, NY

Raising Women's Voices-New York (RWV-NY) works at the state and community level to protect access to reproductive health services that are threatened by religious restrictions as well as ensures the needs of diverse women and their families are addressed in health reform implementation. The Ms. Foundation's grant supports RWV-NY's federal level advocacy to defend the ACA, and its state-level advocacy to adopt policies and regulations to expand contraceptive coverage protections in New York. RWV-NY will also continue its healthcare insurance literacy campaign and its role as a network that connects and supports reproductive health, rights, and justice groups from across the country.

## Special Opportunity/ Capacity Building Grants

### **The Afiya Center ..... \$5,000**

Executive Director: Marsha Jones, Dallas, TX

The Afiya Center strategically addresses harmful reproductive health and abortion policies with a focus on the lives of Black women and girls. The Ms. Foundation's grant supports the first-ever Texas Black Women's Reproductive Justice Summit.

### **Surge Reproductive Justice ..... \$4,000**

Executive Director: Kirsten Harris-Talley, Oakland, CA

Surge Reproductive Justice advances racial and reproductive justice through community engagement, education, and policy advocacy by mobilizing communities. The Ms. Foundation's grant supports capacity building and leadership transition support.

### **URGE (United for Reproductive and Gender Equity) ..... \$1,000**

Executive Director: Kierra Johnson, Washington, DC

URGE, a national organization, trains emerging young leaders and provides tools to organize, network, and exchange ideas focused on a youth-centered pro-choice reproductive justice agenda. The Ms. Foundation's grant supports URGE's unHappy Hour, an intergenerational Women's March meet up, that encourages marchgoers to take political action after January 21; to collect and share stories about the march and resistance; and to be a site where young progressives meet and engage about social justice issues.

*My future is a place where we are all valued the same: in our education, in our jobs, in our roles, in our thoughts, in our lives! And our differences are celebrated, praised, valued!*

— Suzanne **#WeWontGoBack**

# Spotlight on: WEST VIRGINIA **FREE**



Since 1989, West Virginia FREE (WV FREE) has been a tireless champion for reproductive healthcare, rights, and justice in the Appalachian region. Born from a coalition of nonprofit organizations alarmed by their state's dismal rates for infant mortality, unintended teen pregnancies, low infant birth weights, and lack of access to prenatal services, WV FREE has dedicated its efforts to raising up the urgent needs for women's health, through a concentrated grassroots movement throughout the state.

WV FREE uses a multipronged approach that highlights women, especially from immigrant communities, communities of color, low-income families, and young people – those least likely to have access to resources, services, and assistance in reproductive health issues. WV FREE produces resources educating the public on reproductive health services, family planning, and abortion; builds and launches regular advocacy campaigns, such as their efforts to prevent HB 2002 from limiting teens' ability to access abortion services; provides research such as their recent survey showing that West Virginians support a woman's right to choice; and hosts events such as Lobby Days to bring sharp focus to policies that impact women and their health. WV FREE also works with local and statewide organizations on Change the Current, bringing attention to the state's water health crisis; and on efforts to increase the number of women participating in local and state politics.

**More about WV FREE:** <http://www.wvfree.org>

# WOMEN'S SAFETY

In recent years the social and political climate in the US has exposed the depths of White supremacy and patriarchy in the country's attitudes, institutions, policies, and practices; and Black women and girls caught at the intersections of these experiences are among those who suffer the most harm. Black women and girls experience high rates of intimate partner violence, and are incarcerated at more than twice the rate of White women and more than other races.

In response to this atmosphere, the Ms. Foundation for Women has realigned the focus of our Safety program on dismantling systems that negatively impact women and girls through a Black queer, feminist perspective. Since our founding, we have defended and prioritized women's safety and fund organizations working to end all forms of violence against women and girls: Our current portfolio highlights the urgent, critical needs of Black women and their communities.

The Safety program grantee-partners draw on a holistic, integrated approach, with a nuanced understanding of the various ways in which criminalization, sexual assault and violence, and state-sanctioned violence impacts the lives of Black cis- and transgender women and girls. By providing financial, leadership building, and other supports, the Ms. Foundation works with these organizations to ensure Black women and girls are supported to live their most healthy and safe lives. Our Safety program also cultivates the power of Black-led and -serving organizations that build power in their communities to sustain and grow a vibrant, broad-based movement

## Grants: Women's Safety

### **Black Women's Blueprint ..... \$30,000**

Executive Director: Farah Tanis, Brooklyn, NY

Black Women's Blueprint (BWB) is a civil and human rights organization committed to amplifying the voices of women, girls, and gender-fluid people of African descent in all their diversity. The Ms. Foundation's grant supports BWB's mission to secure social, political, and economic equality and to demand a culture where women of African descent are fully empowered and where disparities predicated on gender, race, sexual orientation, gender identity, incarceration status, and other disparities are erased.

### **BYP100 ..... \$35,000**

Executive Director: Charlene Carruthers, Chicago, IL

BYP100 is an activist, member-based organization of Black 18-to-35-year olds, dedicated to creating justice and freedom for all Black people. The Ms. Foundation's grant supports BYP100's work to end the criminalization of Black youth, dismantling the prison industrial complex, and expanding and securing LGBTQ and women's rights. BYP100 aims to achieve these goals through building a collective focused on transformative leadership development, direct action, organizing, advocacy, education, and healing justice using a Black queer feminist lens.



Photo credit:  
Black Women's Blueprint (NY)



**EveryBlackGirl..... \$30,000**

Executive Director: Vivian Anderson, Columbia, SC

EveryBlackGirl, created in the wake of the Spring Valley High School (Columbia, SC) assault on a Black female student, works to create a world where every Black girl can thrive. The Ms. Foundation’s grant supports their expanded focus on working with all stakeholders in spaces where Black girls live, learn, work, and play to ensure that they thrive, providing the tools for self-organizing through education, healing justice, community and leadership development, income generation, food justice, as well as providing emergency shelter to Black girls and transforming what public safety looks like for Black women and girls and their families.

**Girls for Gender Equity..... \$35,000**

Executive Director: Joanne Smith, Brooklyn, NY

Girls for Gender Equity (GGE), a leading intergenerational grassroots advocacy and service delivery organization, works to center the voices and experiences of young women of color within the racial and gender justice movement of the 21st century. The Ms. Foundation’s grant supports GGE’s programs for transformational movement building with cis, trans, and gender nonconforming young people of color, working to develop their often-untapped leadership and advocacy potential.

**National Black Women’s Justice Institute..... \$15,000**

Co-Founder, President and CEO: Monique Morris, Berkeley, CA

The National Black Women’s Justice Institute (NBWJI) focuses on the reduction of racial and gender disparities in the justice systems affecting cisgender and transgender Black women, girls, and their families. NBWJI also works with universities, organizations, and consultants on behalf of Black women and girls in the U.S. impacted by criminalization and the criminal justice system directly and indirectly because of their race and gender. The Ms. Foundation’s grant supports NBWJI’s research, technical assistance, public education activities, civic engagement work, and policy advocacy.

**Trans Sistas of Color Project ..... \$25,000**

Executive Director: Bré Anne Campbell, Detroit, MI

Trans Sistas of Color Project (TSOCP) uplifts, impacts, and influences the lives and welfare of transgender women of color in Detroit. Through trans-centric programming, projects, services, partnerships, and events, TSOCP works to remove the systemic barriers that prevent transwomen of color from living full lives. The Ms. Foundation’s grant supports TSOCP as it operates as a rapid-response organization acting on the immediate needs of transwomen of color and working to promote their safety and security. The Ms. Foundation's grant also supports TSOCP’s intentional, continued representation and uplifting of the culture, legacy, spirit, and energy of transwomen of color, for the well-being and socio-economic, educational, and employment advancement of transwomen of color.

**Women With A Vision ..... \$35,000**

Executive Director: Deon Haywood, New Orleans, LA

Women With A Vision (WWAV), a community-based grassroots organization created by and for women of color in New Orleans, is one of the longest serving groups working with women and girls and the criminalization of low-income communities. The Ms. Foundation’s grant supports WWAV’s use of relentless advocacy, health education, supportive services, and community-based participatory research in order to improve the lives of marginalized women, their families, and communities by addressing the social conditions that hinder their health and well-being. The grant also supports WWAV’s launch of its Young Women With A Vision afterschool program to promote leadership development and sisterhood among Black girls, with a unique curriculum integrating a human rights, Black feminist, reproductive justice, and social justice praxis.

*Women and girls will have equality, and not be looked upon as an object to men for their pleasure and abuse. More younger women taking self-defense classes to protect themselves from the abuse of men, and these kinds of self-defense techniques will be passed on down through generations. That more women will have leading roles, around the world, and be treated with the dignity and respect they deserve.*

— Mary #WeWontGoBack

Spotlight on:

# WOMEN WITH A VISION



Women With A Vision (WWAV), founded in 1989 in New Orleans, began as a grassroots response to the growing – yet often-overlooked – crisis of HIV/AIDS transmission through the Black community. More than 25 years later, WWAV’s fight for underrepresented, overlooked communities hasn’t stopped. In fact, their dedication to creating safe, healthy, and supportive environments for Black women and their families has only grown stronger.

While WWAV continues to focus on health through their advocacy for HIV-positive women, drug policy reform efforts, and building a Healers With A Vision network, their efforts have expanded to also include addressing policies and legislative actions that negatively impact women and communities of color; sex worker rights; and harm reduction. Women With A Vision gained national attention for their successful fight against a Louisiana law that forced women to register as sex offenders if they traded sex for food or a place to sleep, a law that overwhelmingly targeted poor women of color and transgendered persons. WWAV’s courage to speak out also made them targets of a break-in and arson attack in 2012 that destroyed much of their office. Yet like a phoenix, WWAV rose from the ashes to rebuild their space – and to continue to be a voice for communities who depend on their strength, commitment, and bravery to promote and protect their safety and rights to dignity.

**More about Women With A Vision:** <http://wwav-no.org>

---

## SPECIAL OPPORTUNITY GRANTS

**Maine People's Resource Center ..... \$2,000**

Executive Director: Jesse Graham, Portland, ME

Provides support for the Maine One Fair Wage Campaign.

**New York Women's Foundation ..... \$10,000**

Executive Director: Ana Oliveira, New York, NY

The New York Women's Foundation (NYWF) has a pooled philanthropic fund called The New York City Fund for Girls and Young Women of Color, supported by a diverse funder group working together to make bold grant making investments catalyzing broad-based change for girls, young women, transgender, and gender nonbinary youth of color.

---

## CAPACITY BUILDING: DISCRETIONARY GRANTS

**Adhikaar for Human Rights  
and Social Justice ..... \$20,000**

Executive Director: Pabitra Benjamin, Woodside, NY

The Ms. Foundation's grant provides support for phase three of the executive transition.

**Center for Frontline Retail ..... \$25,000**

Executive Director: Anika Campbell, New York, NY

The Ms. Foundation's grant provides support for professional development and database support.

**EveryBlackGirl ..... \$10,000**

Executive Director: Vivian Anderson, Columbia, SC

The Ms. Foundation's grant provides support for strategic planning, fiscal management, and communications.

**National Asian Pacific American  
Women's Forum \* ..... \$10,000**

Executive Director: Sung Yeon Choimorrow, Chicago, IL

The Ms. Foundation's grant provides support for leadership transition.

**Power U Center for Social Change ..... \$10,000**

Executive Director: James Lopez, Miami, FL

The Ms. Foundation's grant provides support for leadership transition.

SPECIAL GRANTS AND  
DONOR-ADVISED FUNDS



Photo credit:  
Trust Black Women of  
grantee-partner SisterSong

---

## PRESIDENT'S DISCRETIONARY GRANTS

Grants listed represent those made at the discretion of the Ms. Foundation for Women President and CEO.

**Forward Together** ..... \$10,000

Executive Director: Eveline Shen, Oakland, CA

Supports the project #our100.

**Third Wave Fund** ..... \$10,000

Executive Director: Rye Young, Brooklyn, NY

Supports the Flush Transphobia Fund.

**Persephone Productions, Inc.** ..... \$1,000

CEO: Bonnie Erbe, Falls Church, VA

Supports the project #WomanWatch.

---

## GLORIA STEINEM FUND

The Gloria Steinem Fund is a designated fund that disburses grants based on recommendations made by Gloria Steinem.

**The African American Policy Forum** ..... \$5,000

Co-Founder and Executive Director: Kimberlee Crenshaw, New York, NY

Supports The New ERA project.

**Women of Color Network** ..... \$1,000

Chief Executive Director: Tonya Lovelace-Davis, Harrisburg, PA

Supports the initiative #JaggedJustice.

**Black Women's Blueprint** ..... \$2,000

Executive Director: Farah Tanis, Brooklyn, NY

Supports The Words of Fire Conference at Spelman College, a Praise Song for Black Feminists.

**Feminist Majority Foundation** ..... \$30,000

Executive Director: Katherine Spillar, Beverly Hills, CA

Supports the Global Reporting in *Ms. Magazine*, which aims to inspire and empower feminists to take action to achieve equality and global justice.

**Family Values at Work** ..... \$1,000

Executive Director: Ellen Bravo, Milwaukee, WI

Provides sponsorship for the Game Changer Award Event.

---

## DONOR-ADVISED FUNDS GRANTS: OMA FUND

The Oma Fund is a donor-advised fund of the Ms. Foundation for Women. The Oma Fund supports organizations working to tackle the most challenging issues in reproductive health through the leadership of younger generations of activists.

**All Above All** ..... \$5,000

President: Kelly Blanchard, Cambridge, MA

Supports the work of All Above All that increases access to abortion for women who face the greatest barriers, including low-income women, immigrant women, young women, and women of color.

**University of Oklahoma Center for Social Justice** ..... \$10,000

Chief Financial Officer: Trent Wells, Norman, OK

Supports Take Root: Empowering Red State Perspectives on Reproductive Justice Conference.

**Ibis Reproductive Health** ..... \$10,000

President: Kelly Blanchard, Cambridge, MA

Supports the Later Abortion Network (LAN), which aims to mobilize a coordinated effort within the reproductive health, rights, and justice communities to identify innovative strategies to ensure access to and provision of later abortion in the U.S.

**National Network of Abortion Funds** ..... \$20,000

Executive Director: Yamani Hernandez, Boston, MA

Support general operations toward fighting against threats to abortion access and responds to the growing need, especially among disadvantaged women and girls.

**Nursing Students for Choice** ..... \$25,000

Executive Director: Karmann Peters, St. Paul, MN

Supports general operations to help provide nursing students and alumni with sexual and reproductive healthcare training, and education opportunities.

**Provide, Inc.** ..... \$25,000

Executive Director: Melanie Zurek, Cambridge, MA

Provides general operating support to build a health and social infrastructure that supports, enhances, and sustains equitable access to safe abortion for women in the South and Midwest.

**Trustees of Hampshire College** ..... \$5,000

CLPP Director: Mia Kim Sullivan, Amherst, MA

Provides support for the project Building the Movement: Training Young Leaders in the Reproductive Justice Movement.

**CoreAlign** ..... \$5,000

Executive Director: Dr. Sujatha Jesudason, Oakland, CA

Provides general operating support for CoreAlign’s Speaking to Power (SR2P) Fellowship Program which increases the skills and competency of both people of color and White leaders to address issues of race and power in the reproductive health, rights, and justice movement.

---

## DONOR-ADVISED FUNDS GRANTS: ASIAN WOMEN GIVING CIRCLE

The Asian Women Giving Circle is a donor-advised fund of the Ms. Foundation that pools resources from Asian American women and other supporters toward Asian women-led social change projects. The current focus is Arts and Activism.

**Asian American Film Lab** ..... \$7,000

President: Jennifer Betit Yen, New York, NY

Supports the project *Before the Wall*.

**The Asian American Writers’ Workshop** ..... \$12,000

Executive Director: Ken Chen, New York, NY

Supports the project Profile This: Girls.

**Just Vision** ..... \$7,000

Executive Director: Suhad Babaa, Washington, DC

Supports the project The Women Leaders of the First Intifada Untitled Film.

**Moustache Cat Dance** ..... \$4,000

Director: Kaoru Ikeda, New York, NY

Supports the project Freedom Isn’t Free.

**Kit Yan Productions** ..... \$4,000

President: Kit Yan, New York, NY

Supports the project Interstate: A New Musical.

**Adele Pham** ..... \$12,000

Filmmaker: Adele Pham, New York, NY

Supports the project Nailed It.

**Nina Sharma** ..... \$3,000

Writer: Nina Sharma, New York, NY

Supports the workshop No-Name Mind: Stories of Mental Health from Asian America.

**Once in a Blue, Inc.** ..... \$12,000

Founder: Stephanie Wang-Breal, Brooklyn, NY

Supports the project Blowin’ Up.

**Boston Street Lab, Inc.** ..... \$3,000

Executive Director: Leslie Davol, New York, NY

Supports the project DRAW NYC in Chinatown.

**The W.O.W. Project** ..... \$4,000

Founder and Executive Director: Mei Lum, New York, NY

Supports the workshops Resist Recycle Regenerate.

---

## DONOR-ADVISED FUNDS GRANTS: ROSA LUXEMBURG FUND

The Rosa Luxemburg Fund is a donor advised fund of the Ms. Foundation that disburses grants based on recommendations made by the donor.

**Organization United for Respect** ..... \$10,000

Co-Executive Director: Andrea Dehlendorf, Oakland, CA

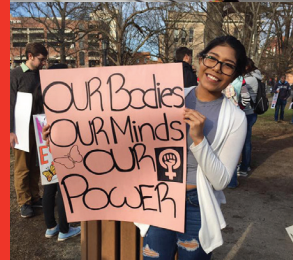
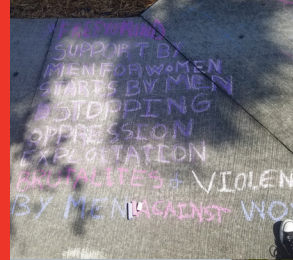
Provides general operating support to their work of winning respect and improving pay and working conditions for people working in retail.

**Solidaire Network** ..... \$20,310

Co-Founder and Executive Director: Leah Hunt-Hendrix, San Francisco, CA

Supports network committed to funding social movements in three ways: rapid response for movement moment; pooled fund for innovations in movement building; and aligned giving for movement infrastructure.

# GRASSROOTS ACTIVISTS IN ACTION



In September 2016 the Ms. Foundation released **Raising Our Nation: Forging a More Robust and Equitable Childcare System in America**, providing a comprehensive view of the state of childcare in the US. With input from Economic Justice grantee-partners, policymakers, program directors, and other key stakeholders, the report highlighted the challenges parents faced in finding affordable, high-quality, safe childcare and offered ways to make childcare options more accessible to families who urgently need support.

In October 2016 the Ms. Foundation announced our refocused Women's Safety program. Previously, our Safety program highlighted child sex abuse and grassroots organizations working to improve policies and legislation protecting child victims. With its new direction the Safety program centered the experiences of Black women and girls, trans women, and gender nonconforming people confronting race- and gender-based discrimination, abuse, and violence. The Safety program announced the first seven grantee-partners: **Black Women's Blueprint (NY); BYP100 (national); EveryBlackGirl (SC); Girls for Gender Equity (NY); National Black Women's Justice Institute (CA); Trans Sistars of Color Project (MI); and Women With A Vision (LA).**

**Young Women United** in New Mexico are vigorous champions of reproductive health and rights for families in their state. In June 2017, they celebrated efforts to make contraceptives more available to women when New Mexico's Pharmacy Board allows trained, certified pharmacists to write prescriptions for oral contraceptives. New Mexico became one of just five states to provide this access. [http://www.santafenewmexican.com/news/health\\_and\\_science/new-rule-lets-pharmacists-prescribe-contraceptives-in-new-mexico/article\\_7acce095-57ed-5ef7-a761-d149cad733e7.html](http://www.santafenewmexican.com/news/health_and_science/new-rule-lets-pharmacists-prescribe-contraceptives-in-new-mexico/article_7acce095-57ed-5ef7-a761-d149cad733e7.html)

Grantee-partners in the **Public Voices Fellowship** program joined the Ms. Foundation to thank our donors and supporters for their encouragement during the December 2016 holidays. <https://www.youtube.com/watch?v=aCu0hXNxeX8>

**Northwest Health Law Advocates**, working within the Healthy Washington Coalition, advocated for the Contraceptive Access Bill (HB 1234), to provide women across the state with needed access to contraceptives. The bill passed in the state house and senate – and NoHLA celebrated a victory for reproductive healthcare access for women, who now have access to 12 months of contraceptive dispensing. <https://nohla.org/> AND <https://app.leg.wa.gov/billsummary?BillNumber=1234andYear=2017>

**Parent Voices**, a longtime Ms. Foundation for Women grantee-partner, is a tireless force for working parents in critical need of childcare services in California. Working in partnership with the Child Care Law Center, they advocated for California to increase the State Median Income (SMI) policy – one stuck at levels 10 years old that increasingly failed to address working families' needs. Their efforts paid off in June 2017 when the California state legislature allocated \$25 million in additional childcare subsidies – subsidies that provided more than 280,000 families with access to childcare services.

During the historic Women's March in Washington, DC, on January 21, grantee-partners **URGE, National Latina Institute for Reproductive Health, National Asian Pacific American Women's Forum, and SisterSong** were among the event speakers as hundreds of thousands protested against the incoming Trump Administration. Ms. Foundation President and CEO Teresa C. Younger and Co-Founder Gloria Steinem also addressed the crowds. With nearly five million participants, the March involved 1.3% of the U.S. population and was the largest single-day demonstration in U.S. history.

As part of the Women's March program, **Ms. Foundation** joined **Planned Parenthood, United State of Women, Generational Progress and former grantee-partner National Domestic Workers Alliance** to host an Action and Advocacy Day on January 22. The Action and Advocacy Day training and education workshop encouraged women to take political action and social advocacy, to counter the threats to women's rights from the Trump Administration.

In December 2016 **Centro de Los Derechos del Migrante (CDM)** released its Impact Report, showcasing 10 years of their advocacy for migrant workers' rights in Mexico and the U.S.

**ACT for Women and Girls** launched a billboard campaign in April 2017 in Tulare County, CA to highlight inclusion as a progressive value in one of California's most conservative regions.

*I see a time when race, gender, religion, sexual orientation, and inequalities are no longer talked about because we no longer see the differences between us, we see the strengths we all bring to the struggle of being human.*

— Anonymous **#WeWontGoBack**



1. Hillary Rodham Clinton, former Secretary of State 2. Vivian Anderson, Executive Director EveryBlackGirl 3. (l-r) Bob Bland, Tamika D. Mallory, Linda Sarsour, and Carmen Perez National Women's March Co-Chairs 4. Tannia Esparza, Executive Director Young Women United 5. Marcia Olivo, Executive Director Miami Workers Center 6. Sydney Phillips, Free to Be You and Me honoree 7. Dorothy Pittman-Hughes (l) with MLICCI grantee-partner Cassandra Welchlin (r) 8. Entertainer Chelsea Handler (l) with Gala guest

# 29TH ANNUAL GLORIA AWARDS: A SALUTE TO WOMEN OF VISION





1. Carolines Comedy Club owner Caroline Hirsch with Co-Founding Mother Gloria Steinem 2. Political Commentator Sally Kohn 3. Philanthropist Marcy Syms (far l), Gloria Awards honoree Linda Sarsour (c), Honorary Founding Mother Marie C. Wilson (r) and Gala guests 4. Gloria Awards and After Party guests 5. Grammy Award winning Musician Carolyn Malachi 6. Actress Kathy Najimy (l) and Clinton Chief of Staff Huma Abedin (r) 7. Comedian and Writer Lizz Winstead (l) and Co-Founding Mother Gloria Steinem 8. Poet-Artist and After Party Co-Host Cleo Wade 9. Actress Kathleen Turner (l) with Gloria Steinem (r) 10. Co-Founding Mother Marlo Thomas (r) and TV Personality Phil Donahue (l)

More than 750 feminists joined the Ms. Foundation for our **29th Annual Gloria Awards: A Salute to Women of Vision**, held on May 3, 2017, at Capitale in New York City. Hosted by Co-Founding Mother Gloria Steinem and President and CEO Teresa C. Younger, the sold-out ceremony celebrated the leaders, organizers, and innovators advancing gender equity.

Focused on women making history and making a feminist future possible, we honored former Secretary of State **Hillary Rodham Clinton**, who became the first woman nominated as the presidential candidate of a major political party in the US; grantee-partners **Vivian Anderson of EveryBlackGirl (SC)**, **Marcia Olivo of Miami Workers Center (FL)**, and **Tannia Esparza of Young Women United (NM)**; and the National Co-Chairs of the historic Women’s March **Tamika D. Mallory, Bob Bland, Carmen Perez, and Linda Sarsour**. The gala also honored the the Peggy Charren/Free to Be You and Me award’s third recipient, **Sydney Phillips**, as a young feminist who worked to create equal opportunities for girls in sports.

Award-winning comedian **Judy Gold** brought her trademark humor to our live auction. At the Gloria Awards After Party, musician and women’s rights activist **Kiran “Madame” Gandhi** provided music for an evening of dancing, mingling, and celebrating, with *Teen Vogue* editor-in-chief **Elaine Welteroth** and artist-poet **Cleo Wade** as hosts for the late evening celebration.

The Ms. Foundation raised over \$1.1 million from this year’s awards thanks to our attendees, donors, and event sponsors. We are grateful to our supporters, who help us promote grassroots activists through funding, training, and advocacy.

**More at: <https://forwomen.org/gala>**

There is nothing elitist about fighting for women’s rights, equality, and opportunity.

– Hillary Rodham Clinton

Our movements against oppression must hold on to the truth that those closest to the problem are also closest to the solution.

– Linda Sarsour



## LAUGHING OUR WAY TO THE REVOLUTION: MS. FOUNDATION COMEDY NIGHT AT CAROLINES

On October 25, 2016, more than 300 feminists joined the Ms. Foundation to “Laugh Our Way to the Revolution” at our **21st Comedy Night at Carolines on Broadway**.

The 21st Comedy Night featured eight comics, including award-winning comedian **Judy Gold** as the host, who brought her own fiercely funny insights to the event. Each comic – **Kate Clinton, Katie Goodman, Aparna Nancherla, Hadiyah Robinson, Liza Treyger, Michelle Wolf**, and *Saturday Night Live*’s **Sasheer Zamata** – donated her time and talent to make the night a success.

We thank our supporters who joined us for an evening of funny feminism, and we’re extremely grateful to Carolines owner and longtime Ms. Foundation supporter Caroline Hirsch for her generosity and encouragement!

See more at <https://forwomen.org/comedy>



## THIRD ANNUAL MS. FOUNDATION ON MARTHA'S VINEYARD

On August 14, 2016, the Ms. Foundation hosted its third annual *Ms. Foundation on Martha's* summer event, bringing together our leadership, staff, and supporters on Martha's Vineyard in celebration of the collective power of women. This year's event, co-hosted by New England Blacks in Philanthropy, welcomed more than 100 donors in support of our efforts to advance the grassroots movement for gender equity and social justice.



## WOMEN: NEW PORTRAITS BY ANNIE LEIBOVITZ

On November 22, 2016, the Ms. Foundation joined famed photographer Annie Leibovitz for a special reception celebrating her newest work, *Women: New Portraits*. Commissioned by UBS and held in the former Bayview Correctional Facility for Women in New York City in partnership with the NoVo Foundation, nearly 200 supporters attended. The exhibit was a continuation of Leibovitz's 1999 series, *Women*, and highlighted the diversity, strength, and power of women from different countries and industries.

**Learn more:** <https://www.ubs.com/microsites/annie-leibovitz/en/exhibition.html>

## ILLUMINATING THE CULTURE OF VIOLENCE AGAINST WOMEN

On February 23, 2017, the Ms. Foundation joined HOWL! Arts to present *Illumination: Spotighting the Culture of Violence against Women*. The panel was moderated by President and CEO Teresa C. Younger and featured New York City Anti-Violence Project Executive Director Beverly Tillery; Re-Entry Works! Founder Sharon Richardson; Olympia Perez, TransJustice Program Co-Coordinator for Leadership Development at the Audre Lorde Project; and artist/filmmaker Beth B. The panel was complemented by Beth B.'s VOYEUR exhibit, as the panel and works explored the acceptance and impact of violence and abuse on women, including criminalization.

## #LETSTALKFEMINISM

In fall 2016 the Ms. Foundation, in partnership with the **Brooklyn Historical Society**, hosted a four-part series examining feminism and women's issues. The series, titled **#LetsTalkFeminism**, included "Moving Through This World: A Conversation with Roxane Gay," featuring bestselling author and cultural commentator **Roxane Gay**; "Are We There Yet? The Illusion of a Post-Sexist Society," moderated by President and CEO Teresa C. Younger; "Nerd Is No Longer Niche," which featured External Affairs Vice President Angélique Roché and highlighted feminism and sexism in comics, videogames, and other communities where "outsiders" are supposedly welcome; and "The Darker Side of Reproductive History," providing an in-depth discussion of America's fight over women's bodies and featuring **Jessica Rojas-Gonzalez** from grantee-partner **National Latina Institute for Reproductive Health**.

**See more:** <https://bklyner.com/highlights-lets-talk-feminism-roxane-gay-brooklyn-historical-society-fortgreene/>

*Feminism is not dead.*

– Angélique Roché

*We inhabit many identities. We're not just women, and all women are not created equal ... I genuinely believe that Hillary Clinton has the right people talking to her, but we can't sit there and think that her success means things are better for women, when Black women, Asian women, [and] Latina women are still struggling. So we need to ask how do we lift all women, not just the most famous White woman in the world, before we say it's a victory for women.*

– Roxane Gay



## #WEWONTGOBACK

In the aftermath of the 2016 presidential election results, millions of people and organizations fighting for gender equity and civil rights increased their efforts to protect our fragile gains from legislative threats. The Ms. Foundation was one of the leading organizations joining the historic Women's March in Washington, DC, making clear our continued commitment to grassroots activists working for reproductive rights, women's safety, and women's economic justice. Our grantee-partners National Latina Institute for Reproductive Health (NLIRH), URGE, SisterSong, and National Asian Pacific American Women's Forum (NAPAWF) spoke at the Women's March; and leadership from the Ms. Foundation co-led advocacy training and education workshops with Planned Parenthood, United State of Women, and other organizations for women who wanted to increase their participation in efforts to promote gender equity and social justice. We also released a video which made our stance clear: #WeWontGoBack on the efforts to advance the needs and rights of women, communities of color, and LGBTQ people. Our video, which gained 1,500,000 views and 30,000+ shares, featured grantee-partners as well as US Congresswoman Pramila Jayapal (D-Washington, DC), and was reviewed by *HuffPost*.

#WeWontGoBack continued as part of our 29th Annual Gloria Awards and as a campaign that asked supporters to share their vision of a feminist future.

In my feminist future, we trust, value, and support all girls/women, regardless of race, class, sexual orientation, disability, or age. We embrace feminism as a way to build an equal, diverse, and successful society. #WeWontGoBack

---

– Samantha Jacobson, YPAC

A country where there are no glass ceilings, where doors are open and pay is equal. A country where a woman's body is her own and not a battlefield for men with a political agenda. A country where little girls can be whatever they want to be and nobody looks at them askance or even questions their rationale. A country where everyone is truly equal irrespective of their gender, country of origin, race, color, or creed.

---

– Gabriela Lemus

At 68 years young, [I] am old enough to remember how it really was for women especially women of color. My prayer is for my grandchildren and great-grandchildren to be able to obtain all the rights afforded to everybody. To be able to have say so over your body, to receive equal pay as your male counterparts. To be heard when reporting domestic violence. To not have to deal with sexual harassment on the job. To not be judged by your looks but by your brain and your character. To be taken seriously as a person not as property. This is my utopia.

---

– A concerned Black woman

It should look [like] different shades of people. Women large and small should make equal pay, [have] equal opportunity and be able to walk the streets without fear. They should be heard and not muffled. Women should applaud each other and support each other. Men and women would have equal respect and would walk side by side giving each other support and honor the strengths and weaknesses in each other.

---

– Ruth Shea

[There should be] equal pay, maternity leave, workers' rights, a higher minimum wage, racial equity at work, in schools, in our justice system and in our neighborhoods. A reasonable tax on the wealthy and improved infrastructure. Vaccine acceptance and climate awareness across the country and the world. Comprehensive sex ed in every school and contraception available over the counter. Access to all women's health services, including abortion, for any woman who needs it. Universal healthcare. All mouths fed and all bodies safely sheltered. Quality childcare accessible to all parents. No statute of limitations on rape or child abuse. Equal representation in government and academia. Equal rights and public acceptance for LGBTQ. All this and nothing less. I won't stop fighting til it's done or I'm gone.

---

– Anonymous

# DONOR PROFILE

## LYNN MALERBA



### **What is the Mohegan nation's relationship to its women citizens?**

Mohegan women have always been integral to tribal leadership, back to the late 1700s when Connecticut was a young state, even before women were able to vote or be elected to the legislature. Our nation balances its leadership with men and women equally

represented on our Tribal Council and now on our elected Council of Elders. I am proud that I am the second female Chief of the Mohegan tribal nation. In the 1700s, Anne Uncas was the Chief for a brief time. Throughout Indian country, tribes tend to be egalitarian in leadership.

### **What has been the most unexpected experience you've had as a result of being chief of the Mohegans?**

I think the most glorious experience is the pride of my immediate and extended Mohegan families for my leadership. I am engaged with tribal citizens across generations — from the youngest to the oldest — and I get to know all the families that make up our citizenship. I am blessed to witness times of celebration and also to assist in death those who travel to the ancestors as they continue on the trail of life. Many moments have been so special to me but three stand out: The first was completion of an agreement with Yale to transfer Mohegan cultural artifacts back to our Tantaquidgeon museum, one being a very old succotash bowl inlaid with Wampum that belonged to Lucy Occum, granddaughter of our Chief Uncas, along with artifacts from our Shantok burial grounds. This is spiritually very significant to our people. The second was an honoring ceremony with President Obama that I was fortunate enough to be a part of. Lastly, in concert with our Council of Elders, we are working to restore our language that has not been spoken fluently in over a century.

### **What attracted you to the Ms. Foundation and the possibility of working with the foundation?**

The Ms. Foundation for Women is a vibrant organization. I see it serving two very important functions: One is providing economic support for "boots on the ground" organizations that make an actual difference in the lives of women and children. The second is that it is the thought leader for contemporary issues that affect the social and economic justice for all people in our country.

### **What do you think are the greatest challenges facing women and girls today? How do those challenges impact Native American women and girls?**

The greatest challenges are the unequal opportunities that women and girls face. These inequalities start with education at the pre-school level, along with lack of access to healthcare and uneven social determinants of health. Native women confront even greater challenges. Consider the statistics with regard to sexual assault, poverty, educational challenges, and the remoteness of where Native women live. Look at just one indicator: indoor plumbing and indoor sanitation. How is it that in 2017 not every American Indian and Alaska Native household has running water or an indoor bathroom? When reservation roads are not maintained, how do our children get to school or get to healthcare. When food deserts still exist in Indian country, how do we prevent type 2 diabetes in our children?

### **How do the Ms. Foundation's issues of childcare, workplace advancement, reproductive choice, affordable healthcare, and safety align with your concerns for women of the Mohegan Tribe?**

Early in my work with the Mohegans, the Tribal Council set priorities for our tribal citizens and family and addressed many of the same issues that Ms. Foundation funds through grantees: childcare, maternity and medical leave, safe housing, elder care, healthcare subsidies, education, professional development, protection of our sacred sites and our culture, and strengthening our families. These continue to be priorities for each Tribal Council to ensure that our tribal citizens live healthy, active lives within a safe environment. Our children and elders are especially valued. Our elders connect us to our ancestors and our culture. Our children represent our future and the next generation of leaders.

### **In the time that you've been on the Board of Directors, what has impressed you about the Ms. Foundation?**

The Ms. Foundation has provided sustained leadership on the important issues for the past five decades. Our leadership brings much to the table: Leadership at the board and administrative levels; and diversity practices in its hiring, policy making, and attention to the issues that impact the lives of women who may not have a voice otherwise.

*Chief Mutáwi Mutáhash (Many Hearts) Marilynn "Lynn" Malerba became the 18th Chief of the Mohegan Tribe on August 15, 2010, a lifetime appointment made by the Tribe's Council of Elders. Lynn follows in the footsteps of many strong female role models in the Mohegan Tribe, including her mother, Loretta Roberge, who holds the position of Tribal Nonner (elder female of respect), as well as her great-grandfather Chief Matagha (Burrill Fielding). Prior to becoming Chief, Lynn served as Chairwoman of the Tribal Council and also worked in Tribal Government as Executive Director of Health and Human Services.*

*Previously Lynn was the Director of Cardiology and Pulmonary Services at Lawrence and Memorial Hospital in New London, CT. She holds a Master's Degree in Public Administration from the University of Connecticut, an honorary doctorate from the University of St. Joseph in Hartford, and earned a doctor of nursing practice at Yale University.*

# Our Supporters: Thank You

The Ms. Foundation is grateful to the following individuals and organizations for their support of our programs during 2016 - 2017. The list reflects gifts received between July 1, 2016, and June 30, 2017.

## \$100,000 and more

---

Anonymous (2)  
Ford Foundation  
Groundswell Catalyst Fund  
The Estate of Dolly L. Maass  
NoVo Foundation  
Lynne Rosenthal, Leo S. Guthman Fund  
Starry Night Fund  
The Surdna Foundation, Inc.  
W. K. Kellogg Foundation  
Lucia Woods Lindley

## \$50,000 - \$99,999

---

Anonymous (4)  
Dobkin Family Foundation  
Gwynnie Bee  
Chandra E. Jessee, InMaat Foundation  
Suzanne L. Lerner  
Moriah Fund, Inc.  
Marcy Syms, Sy Syms Foundation

## \$10,000 - \$49,999

---

Anonymous (2)  
Amalgamated Bank  
American Express Company  
Frank A. Baker and Laura Day  
Betsy Bernard and Laurie Peter  
Elizabeth Bremner and Karen Crow  
Jenna L. and Jayne Bussman-Wise  
California Wellness Foundation  
Combined Federal Campaign  
Comcast Corporation  
Jane S. Comer  
Phil Donahue and Marlo Thomas  
The Embrey Family Foundation  
General Service Foundation  
Molly Gochman  
Katie Grover and Mike Campbell  
Hanky Panky  
Lyndon Haviland and Tom Neff  
The Isabel Allende Foundation

Maria and Greg Jobin-Leeds  
Seth A. and Beth S. Klarman  
Helen LaKelly Hunt and The Sister Fund  
Vy Le  
Yin Ling Leung and Shaibal Roy  
The Namaste Foundation  
Marguerite Casey Foundation  
Nancy Meyer and Marc Weiss  
Mohegan Sun  
Morgan Stanley  
Margaret H. Newell  
New York Life Insurance Company  
The Oma Fund  
Open Society Foundations  
Sharon and Robert Prince  
Janet Prindle Seidler Foundation  
Planned Parenthood Federation of America and Action Fund  
Prospect Hill Foundation

Catherine Raphael  
Betty and Gerard Regard  
Rockefeller Philanthropy Advisors  
Seth M. Rosen and Jacob K. Goertz  
Silver Mountain Foundation for the Arts  
Patricia J. Simpson  
Wanda G. and John L. Sobieski  
Jessie M. Stone  
Thanksgiving Fund of the American Endowment Foundation  
Theodore Cross Family Charitable Foundation  
Catherine Yelverton and Laura Traphagen  
Gail S. Wasserman and Ilene Miklos  
The William H. Donner Foundation

## \$5,000 - \$9,999

---

Michele Anthony  
Harriet Anthony  
Freya and Richard Block  
The Bridgespan Group  
Donna Deitch  
Susan Dickler and Sig Van Raan  
Jeannie H. Diefenderfer  
Cheryl Greene  
Katie Grover and Mike Campbell  
Kate and Jerry Hathaway

Hill-Snowdon Foundation  
Caroline P. Hirsch  
Rachel Knight  
Matthew LaFargue  
Alicia B. Lara and Anne Owen-Lara  
Kathy LeMay  
Margaret and William Lynch  
Michelle Mercer and Bruce Golden  
Jessica Neuwirth  
Emily N. Nielsen-Jones and Ross Jones

Brette E. Popper and Paul Spraos  
PricewaterhouseCoopers LLP  
Lynda and Stewart Resnick  
Catherine C. Samuels and Jeremy Henderson  
Jenna S. and Wilson S. Scanlan  
Andrew Stark  
Diana Stark and James S. Francis  
The Yellow Chair Foundation

## \$1,000 - \$4,999

---

Anonymous (5)  
The Anchor Point Gift Fund of Bradley A. Feld and M. Amy Batchelor  
Heather Arnet and David Shumway  
Jennifer Astrachan and David Shumway  
Mary I. Backlund and Virginia Corsi  
Rosina Barba  
Mary J. Barneby  
Laurie F. Beard  
Sarah Beatty  
Georgette Bennett and Leonard Polonsky  
James Bennett  
Nancy Bernstein and Robert Schoen  
Sallie Bingham  
Karen Bishop  
Ashley and Elliott Blanchard  
Julia Blaut and Ned Dewees  
Barbara M. Blount  
Daniela Brady  
Barbara Bridges  
Virginia M. Broberg  
Brigit Brust and Jamie Gordon Brust  
Christine Buckley  
Quent Byerley  
Patricia T. Carbine  
Carl A. Carte  
Bithiah Carter and Andrew Hoffman  
Lisa Chedekel  
Brian Chin  
Corbin Capital Partners  
Letty Cottin Pogrebin and Bert Pogrebin  
Quinn Delaney and Wayne Jordan  
Robert O. Delaney  
Janet L. Denlinger  
Lisa Dolce  
The Dorothy Strelsin Foundation  
Ingrid S. and Stephen F. Dyott  
Empowered Women  
Sean Fahimian  
Sara Fernandez  
The Estate of Elaine Fine  
Barbara Fitts Nickerson and Douglas Fitts  
Fanny Freund  
Eleonor Friedman  
Amber Gavin

Carla Goldstein  
The Samuel and Grace Gorlitz Foundation  
Sara K. Gould and Rick Surpin  
Patrick P. Grace  
Pam L. Grissom  
Tracy Hall  
The Harnisch Foundation  
Cathie B. Hartnett  
Susan J. Hessel  
Seema R. Hingorani  
Wendy Holmes  
David Holtzman  
Home Box Office  
Jill Hummel  
Betsee Isenberg  
Elise Jaffe  
Christine K. Jahnke  
Carol A. Jenkins  
Marilyn Kane  
Elaine Kant  
Erika Karp and Sari Kessler  
Claudia Kulesh  
Susan D. and Charles Knight  
Annette Krassner  
Vivien Labaton  
Christopher Larson  
Geraldine B. and Lawrence Laybourne  
Kimberlyn R. Leary  
Shari Leinwand  
Henry Lerner  
Lesley R. Levine and Na'Ama Firestone  
Jamie Lewis  
Paula Liang  
Elsa Limbach  
Amy C. Liss  
Paulette LoMonaco  
Kelsey Louie  
Mary Malaszek  
Patricia Y. Martin  
Lilla Matlock  
C. D. Mattison  
Eugenia McGill  
Laura Midgley  
Gail Miller  
Gabby E. Milloy  
Sacha Millstone  
Theresa E. Mullen  
Catherine Mulligan  
NBC Universal  
Barbara M. Nessim  
Jim and Helen S. Neuberger

Nancy S. Nordhoff and Lynn Hays  
Kerry O'Brien  
Richard Ochman  
Judi O'Kelley  
Janice C. Oresman  
Lida Orzeck  
Ellen and Benjamin Padnos  
Julie Parker Benello  
Carol T. Pencke  
Susan Penick  
Hilary Pennington  
Susan L. Perley  
Josh Pushkin  
Dipika Rathod  
John Riccardi and Jeff Shah  
Elaine Rocha  
Erin K. Rossitto and Chad P. Labonte  
Nancy and Miles Rubin  
Amy Rugel  
Patricia M. Russo and John E. Karr  
Judith A. Ruszowski and Kenneth C. Regal  
Elizabeth A. Sackler  
Peter Sagerson  
Mary Beth Salerno and Denise Kleis  
Susan Scarola  
Brooke Schafran  
Mark Schroeder  
Cheng Shao  
Georgiana Shea  
The Three Bridge Fund of the Rockefeller Philanthropy Advisors  
Susan Sigda and Alexander Lotocki de Veligost  
Janet Singer  
Barbara Spitzer  
Diane Steingart and Jonathan A. Woodbridge  
Kathleen Stephansen and Andrew D. Racine  
Gabrielle E. Stern  
Sara S. Stuart  
Jean E. Taylor  
Dorothy Q. Thomas  
Sonali Virendra  
Thomas Watson and Beryl Watson  
Verna L. Williams and David Singleton  
Marie C. Wilson and Nancy Lee  
Eric Wittenberg  
Oliver and Helen M. Wolcott

Susan M. Wolford and Delores M. Komar  
Womankind  
Cynthia Wright  
Teresa C. Younger and Ronald Preston  
Judy F. Zankel

## Asian Women Giving Circle: Donors

### \$10,000 and more

---

Abigail E. Disney and Pierre N. Hauser

### \$2,000 - \$9,000

---

Jennifer and Anthon Corriggio  
Taryn Higashi  
Mertz Gilmore Foundation  
Jackie Trinh Quan and Patrick Lin  
Robert Soros  
Starry Night Fund  
Tani H. Takagi  
Elizabeth A. Von Ziegesar-Whip  
Joyce Lin-Yueh Yu and Edward Lai

### \$1,000 - \$1,999

---

Anonymous (2)  
Anne B. Appleby  
Elizabeth and James Chandler  
Melinda Chu  
Aditi Davray  
Danielle D. Do  
Josh Goldfein  
Shinhee Han  
Bomsinae and Jeen Kim  
Julie Y. Kim  
Patricia J. Koze  
Hali Lee and Peter Von Ziegesar  
Young Lee and Erik Wildt  
Susie Lim and David Jin Natter  
Brigitte B. and Suok Noh  
Lisa L. Philp  
Raquel Sumulong  
Vivian Tseng  
Mannar Wong

## DONOR PROFILE

# Clara Duffy



### **What attracted you to get involved with the Ms. Foundation for Women (MFW) and YPAC?**

After years of following the work of the Ms. Foundation from afar, I was invited to attend a YPAC meeting within my first few months of moving to New York. I will never forget the feeling of sitting in the

room, surrounded by this group of incredible people for the first time. I truly felt that I had found my community. We are connected by our common passion to support the important work of the Ms. Foundation and are given incredible access to resources and opportunities from the Foundation to develop our leadership skills. I have learned so much from fellow members, had conversations that changed my perspectives and built lasting friendships!

### **How did you envision the Your Future, Your Finances event? Any takeaways to share with future, young feminists?**

The idea for Your Future, Your Finances initially came from several conversations with friends and colleagues about the relationship between young women and financial literacy and empowerment. After doing some research, I was shocked to discover studies that found that less than 50% of millennial women felt confident in their financial future. This is a dynamic that has played out across generations of women. I would love to see that number double in my lifetime. The first step to getting there seemed to be focusing on bringing together resources to support financial education. The purpose of the event was to create an inclusive and collaborative environment where we could ask our questions and learn what tools are available to us. Our vision was to minimize the intimidation factor often associated with conversations around finance.

### **What do you see as the role of the field of finance in advancing gender equity?**

Through my work as a member of the team at Cornerstone Capital Inc., a firm with a commitment to catalyzing the flow of capital towards a more regenerative and inclusive global economy, I have been exposed to the potential of this field to be a vehicle for creating positive social impact. The way that we make and invest our financial resources has the potential to be a choice that is full of freedom. It has the power to accelerate growth for our communities, support the causes that we care about, and help us to build for a future that inspires us.

### **What is your feminism?**

My feminism has been a journey of learning and unlearning. The more I learn, the more aware I become of the underlying dynamics that create and re-create inequity and shape the experience of each person. It has helped me to understand myself, my community, and the need for leadership on a much deeper level. My feminism has been finding my own voice to speak about the challenges facing women, while giving space for the voices that need to be heard.

### **What is next for YPAC? What do you see for the next generation of YPACers? How will they build off this current group of YPACers?**

This group is unique in its ability to bridge the forty-year legacy of the Foundation with the future feminist leaders of tomorrow, providing the perfect forum to learn from the past while building for the future. To me, the strength of YPAC is the community that it has created around a core connection to the mission and vision of the Ms. Foundation for Women. It is supportive, collaborative, and enriching. Our meetings often run hours over because we don't want them to end! We would love to see our membership grow outside of New York, and outside of our core group of young professionals. We hope that access to this type of community, just like the Foundation's vision for power and possibility, will not be limited by gender, race, class, sexual orientation, disability, or age. YPAC has made this a central part of our discussions and initiatives for this year and as we look into the future. I am excited to see where we go from here!

*Clara Duffy is a co-chair of the Young Professionals Advisory Committee (YPAC) at the Ms. Foundation for Women, which supports our mission through fundraising, outreach, and special events. To learn more about YPAC visit <https://forwomen.org/ypac>*





# Gloria's Future Fund

The Gloria's Future Fund at the Ms. Foundation for Women is a committed group of women and men who believe in and support a nation of justice and equality for all. We thank our Gloria's Future Fund members who, through planned giving, are investing and protecting women's rights today and in the future.

Anonymous (2)	Debra Green	Harriet Lipson	Mary Rose
Sharon Almany	Alice Greenhouse	Amy C. Liss	Mary Sue Rose
Kimberly A. Baer	Kathryn Gregorio	Heidi M. Lloyd	Lynne Rosenthal, Leo S. Guthman Fund
Laurie Benenson	Susan A. Grode	Lora Lonsberry	Mary Beth Salerno
Cheryl Bianchi	Katie Grover and Mike Campbell	Eleanor Y. Lord	Elizabeth M. Schmitt
Lisabeth G. Boyce	Leigh Hallingby	Ruthann Lorentzen	Dorothy Schneider
Elizabeth Bremner and Karen Crow	Nancy L. Hamilton	Margaret and William Lynch	Lindsay J. Schutz
Lindsay Bubar	Mary C. Helf	Schoene Mahmood	Ellen A. Schwartz
Helen Bill Casey	Karen Hillenburg	Patricia Y. Martin	Fran L. Seegull
Susan Nora Clark	Adelade Hixon	Michele M. Mattei	Martine Shahar
Michelle M. Clarkin	Sharon E. Howe	Catherine Meek	June A. Siebert
Sheila Collins	Sherry Jubilo	Irene Mink	Claire A. Siesfeld
Bernice Colman	Jena Kanetake-Ingram	Ruthi Muffler	Jane A. Silverman
Regina Cowles	Julie F. Kay	Monica L. Nelson	Audrey Simmon
Robbin Crabtree	Carol F. King	The Oma Fund	Gloria Steinem
Jamie L. Denenberg	Denise Kleis	Vanessa Osman	Lisa E. Stone
Jodie Evans	Marjorie F. Knowles	Catherine M. Park	Bonnie Stylides
Valerie I. Fennell	Ellen L. Konrad	Katy Parks Wilson	Tanisha L. Tate
Marjorie Fine	Alicia B. Lara	Jennifer L. Pate	Kate Tickel
Rebecca Flint	Ava Lazar	Anika Rahman	Nancy L. Toder
Bridget S. Fonger	Diane Lebow	Catherine Raphael	Melanie S. Tomanov
Rhona Frank	Dorothy E. Lee	Bernardine Rice	Julie Tugend
Jodell S. Gabriel	Suzanne Lerner	Diana I. Rigg	Guinevere Turner
Tracy D. Gary	Monica Levin	Ene Riisna	Susan M. Wolford
Sheila Gershen	Lucia Woods Lindley	Trudi S. Riley	Cora R. Wortman
		Francine V. Rivkin	

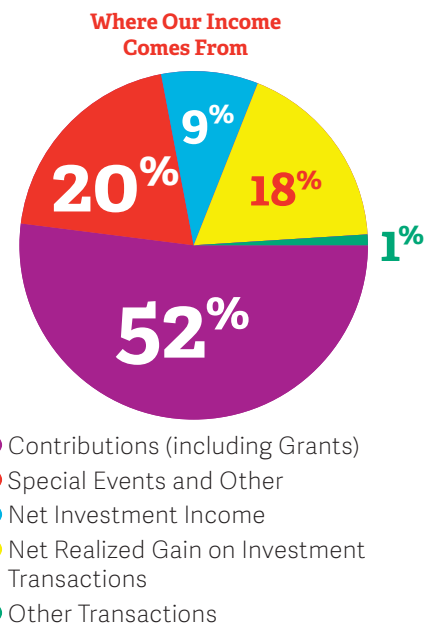
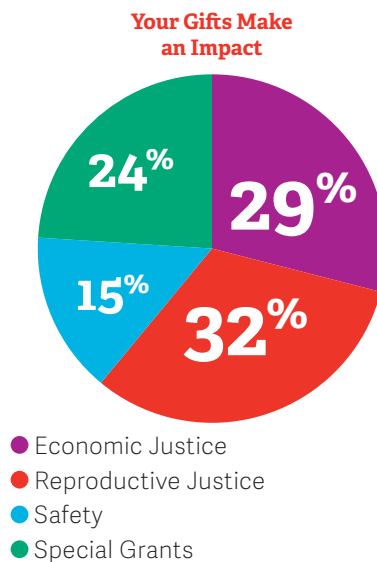
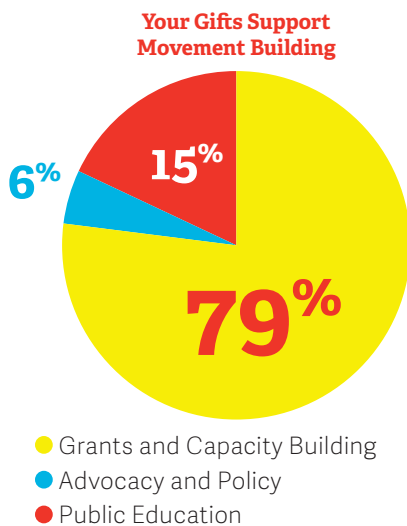
## OUR SUPPORTERS: ESTATES

Alice A. Atchison	Bambi McDonald	Freddy Sirott Engelman	Jane Sherwin Schwartz
Leslie Prince	Shirley Cucchi	Manfred W. Ehrich	Dorothy Jane Heagele
Dorothy Haegele	Rosetta W. Harris	Barbara Sherman	Christine J. Drennan
Sylvia Geraldine Radyx	Vera Skubic	Cynthia McLachlan	Margaret E. Jacobs
Alfred J. Berger	Anne Thaler	Elthea A. Gill	Victoria J. Mastrobuono
Beverly Balch AllinSmith	Louise Rosenfield Noun	Constance M. Rogier	Dolly L. Maass
Jean L. Sherman	Edith Coulter	Ingrid Reti	Elaine Fine
Elli Nilsen	Edith VanHorn	Suzanne Barnett	Carolyn Sonfield
Helen Mintz	Katherine Brownlie	Linda J. Henry	Dr. Idella M. Evans
Jessie Sinclair Smith	Marion Holmes	Marion Sawyer	Carolyn Gunn Strickler

# Statement of Activities

For the years ended June 30, 2017, and June 30, 2016

	2017	2016
<b>PUBLIC SUPPORT AND REVENUE</b>		
Contributions (Including Grants)	\$2,077,331	\$2,528,131
Special Events (Net of Expenses)	779,859	373,567
Net Investment Income	334,475	231,771
Net Realized Gain on Investment Transactions	750,037	3,585,929
Other Income	28,453	2,580
<b>Total Public Support and Revenue</b>	<b>\$3,970,155</b>	<b>\$6,721,978</b>
<b>OPERATING EXPENSES</b>		
<b>Program Services</b>		
Grants and Capacity Building	\$3,605,369	\$3,856,446
Advocacy and Policy	281,611	229,814
Public Education	699,361	951,687
<b>Total Program Services</b>	<b>4,586,341</b>	<b>5,037,947</b>
<b>Supporting Services</b>		
General and Administration	1,069,774	1,181,750
Fundraising	1,127,058	907,373
<b>Total Supporting Services</b>	<b>2,196,832</b>	<b>2,089,123</b>
<b>Total Operating Expenses</b>	<b>\$6,783,173</b>	<b>\$7,127,070</b>
<b>Total Change in Net Assets (Including Unrealized Gain on Investments)</b>	<b>\$557,012</b>	<b>\$(4,717,230)</b>
<b>COMPOSITION OF NET ASSETS</b>		
Unrestricted Net Assets	\$2,273,984	\$2,700,534
Temporarily Restricted Assets	12,849,497	12,035,678
Permanently Restricted Assets	24,737,146	24,567,403
<b>Total Net Assets</b>	<b>\$39,860,627</b>	<b>\$39,303,615</b>



FUNDING A FEMINIST FUTURE

**\$4.5+**  
MILLION

**65+**  
GRASSROOTS ACTIVIST  
ORGANIZATIONS

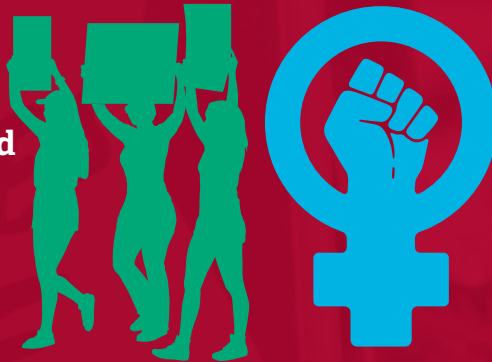
**23**  
STATES

More than \$4.5 million leveraged to advance gender and racial equity, and support grassroots women leaders and organizations working at the national and state level.

# \$1.1 million from Annual Gloria Awards

BUILDING NETWORKS FOR EQUITY

Co-partner in advocacy and organizing training at the historic Women's March



Funding a Southern Strategy to strengthen and expand women's collective power, economic, and social power in the South

BROADENING CONVERSATIONS ON FEMINISM

**1,500,000**  
views



**30,000+**  
shares of video

**4,000,000**  
reach

#WeWontGoBack



**Ms. FOUNDATION**  
FOR WOMEN